

Introcan®	Gauge	Catheter length		Catheter ø (mm)	Straight (S) or wing (W)	Flow rate (ml/min)	Units per box	Code no. REF	
		(inch)	(mm)					FEP*	PUR*
	24	¾	19	0.70	S	22	50	4252071B	4251300
	24	¾	19	0.70	W	22		4254074B	4253302
	22	1	25	0.90	S	35		4252098B	4251318
	22	1	25	0.90	W	35		4254090B	4253310
	20	1 ¼	32	1.10	S	60		4252110B	4251326
	20	1 ¼	32	1.10	W	60		4254112B	4253329
	20	2	50	1.10	S	55		-	4055764
	18	1 ¼	32	1.30	S	105		4252322B	4251342
	18	1 ¼	32	1.30	W	105		4254325B	4253345
	18	1 ¾	45	1.30	S	100		4252136B	4251334
	18	1 ¾	45	1.30	W	100		4254139B	4253337
	16	2	50	1.70	S	210		4252160B	4251350
	16	2	50	1.70	W	210		4254171B	4253353
	14	2	50	1.80	S	345		4252217B	4251369
	14	2	50	1.80	W	345		4254210B	4253361

* Catheter material.
All products are PVC-, DEHP- and Latex/Natural Rubber-free

Literature

- Suzuki T., Fukuyama H., Nishiyama J., Oda M., Takahashi M. Differences in Penetration Force of Intravenous Catheters: Effect of Grinding Methods on Inner Needles of Intravenous Catheters. Tokai J Exp Clin Med. 2004; 29(4): 175-181.
- Moergeli et al. A comparison of first attempt cannulation success of peripheral venous catheter systems with and without wings and injection ports in surgical patients—a randomized trial. BMC Anesthesiology. 2022 (88): 1-11.
- Maki D.G. Ringer M. Risk Factors for infusion-related Phlebitis with Small Peripheral Venous Catheters: A randomized Controlled Trial. Ann Intern Med. 1991 May 15; 114(10):845-54.
- Cooper D. Whitfield M.D. Newton D. Chiarella J. Machaczek KK. Introduction of a non-ported peripheral intravenous catheter with multi-use blood control septum offers improvements in the overall efficiency of the procedure and is clinically well accepted. Int. J of Healthcare Techn and Mgmt. January 2016; 1-20.

Learn more about Introcan®



Download the handling poster:
Introcan® – IV catheter



Introcan®

The IV catheter

Making IV access ...

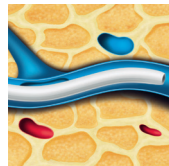
... comfortable for patients

The catheter material assures an easy and smooth catheter advancement for a high patient comfort. Available in **PUR** (polyurethane) for softer, more comfortable, longer in-dwelling performance³ and kink resistance, or **FEP** with firmer construction for arterial access.



Radiopaque stripes

- Radiopaque stripes for good visibility under X-rays



PUR

- Soft at body temperature
- Proven to have positive impact on indwell time and phlebitis risk³



Wings

- Wing design for easy securement

Removable flash plug

- Hydrophobic membrane avoids blood exposure
- Removable flash plug permits attachment of a syringe for aspiration and other special procedures



With and without wings

... convenient for patients

The unique geometry of the universal back cut bevel aids in accessing difficult veins by providing a highly flexible pathway for easy catheter insertion with less tearing.¹



Universal back cut bevel

- Wide choice of insertion angles
- Designed for minimal puncture trauma¹
- Insertion with less tissue tearing (V-cut)¹

... easy to use

Designed to enhance usability during intravenous procedures.

Push-off plate

- Facilitates comfortable and one-handed catheter advancement
- Minimizes incidence of catheter hub touch contamination
- Indicates bevel orientation

... more successful

Multiple attempts to establish an IV access can lead to a delay in treatment. The double flashback technology of Introcan® helps to support first stick success² through quick visual confirmation that both - needle and catheter - are successfully in the vein.⁴



Needle-flash



Catheter-flash

Double flashback technology

- Supports first stick success²
- Needle-flash confirms needle is in the vein
- Catheter-flash confirms catheter placement⁴

Power injectable

Suitable with power injectors set at a maximum pressure of 300 PSI (G18-G24).



Full portfolio

Offering a wide range of gauge sizes (G14-G24) and catheter lengths (19-50 mm).



With wings



Without wings

Easy to use: No extra steps needed to prepare the catheter for insertion.

User benefits:

- Easy puncture at wide range of angles
- Minimum effort of insertion
- Double flashback technology to provide a quick visual confirmation of vein puncture